



Ducted Air Conditioning





Changes for the Better

Mitsubishi Electric has been an integral part of Australian households for more than 45 years, providing high-quality, innovative products.

We pride ourselves on understanding Australian households and delivering products tailored to meet their needs.

MITSUBISHI ELECTRIC
#worksforME



Contents

Why ME	4	Outdoor Units	10
Benefits of Ducted	5	Indoor Units	14
Technology	6	Functions List	18
Zone Controller	7	Product Specifications	19
Control your Comfort	8	Optional Parts	26

Why Choose Mitsubishi Electric?

Whether it is consistent heating or cooling for the home or office, Mitsubishi Electric offers you technology that is quiet, simple to use, energy efficient, and above all, reliable.

Quality & Reliability

When it comes to comfort, efficiency and durability, Mitsubishi Electric is distinctive, and in a very good way. We call it MEQ — Mitsubishi Electric Quality. The MEQ standard results in product tested in accordance with the Mitsubishi Electric standard, it's simply a different standard of testing. Every Mitsubishi Electric air conditioner for each production line, is placed on a testing rig and undergoes a variety of stringent tests before leaving the factory.

Flexible Choice

Mitsubishi Electric air conditioners range from wall mounted, floor standing, ceiling concealed, ceiling cassettes to ceiling suspended units; offering end-users flexibility, with a wide range of options to satisfy most application requirements.

After Sales Service & Spare Parts

We pride ourselves on our local after sales support, including in-house technical support and spare parts support.

Peace of Mind

Mitsubishi Electric air conditioners deliver reliable performance year in, year out. When used in residential applications, Mitsubishi Electric air conditioners are covered by a full 5 year parts and labour warranty.

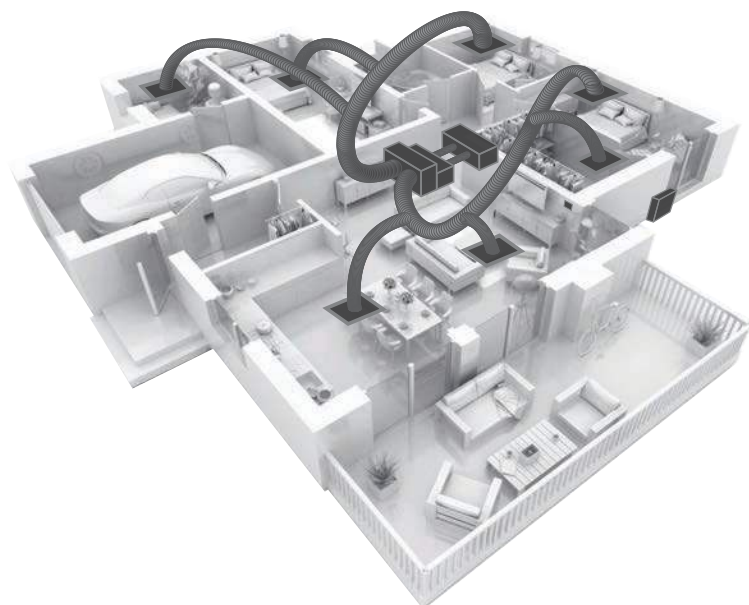


Benefits of Ducted Air

Mitsubishi Electric ducted air conditioning is climate control at the touch of a button. A whole home air conditioning solution suitable for most* existing or new homes.

Ducted air conditioning starts with an indoor unit subtly installed in the ceiling or under floor, circulating conditioned air throughout the home. The outdoor unit is installed neatly on the side of the house, where there is plenty of free space on either side to allow for airflow and easy access for maintenance.

*National average of floor area is 245m² abs.gov.au 8752.0 Building Activity Australia Dec 2018.



Flexibility

Versatile installation options with distance variations of the air in-take and air-outlet. Ducted air conditioning allows cool or warm air to flow throughout the home.

Design

Ducted air conditioning provides a discreet solution, with subtle usage of a range of diffusers, return air grilles and controllers, allowing for sleek installation that can seamlessly integrate into a space, without interfering with interior décor.

Zone Control

Upgrading to a zone controller gives the option of up to 4 or 8 zones, to provide control to different rooms of the home.

Concealed

Ducted air is an effective and convenient solution, with unobtrusive installation in the ceiling cavity or bulkhead space. This whole home application can be connected to up to 8 zones to distribute air where it is needed, whilst being hidden from view with subtle diffusers or grilles.

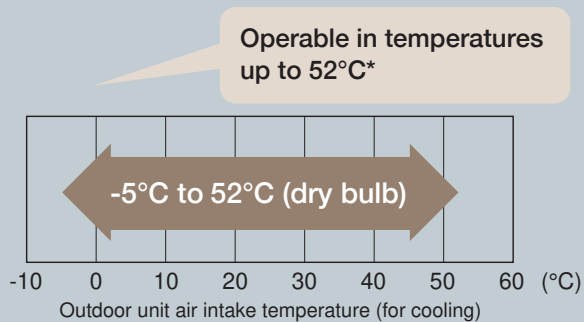
Technology

With Mitsubishi Electric Ducted Inverter Systems, climate control is available at the touch of a button. Our ducted units are ideal for multiple room applications and can incorporate zone control for optimised control. Cool or warm air is ducted quietly throughout the home through diffusers positioned in the ceiling, wall or floor.

Guaranteed Operating Range

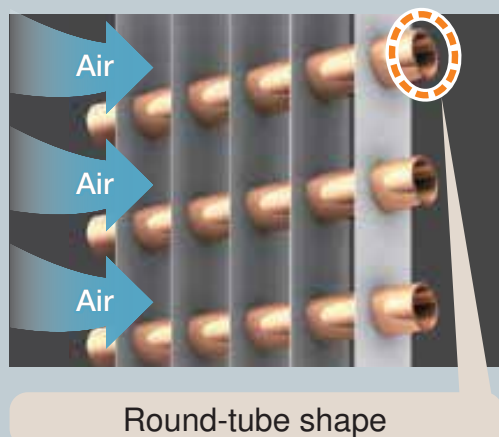
With the harsh Australian environment, it is comforting to know that your air conditioner will continue to operate with a guaranteed operating range of -5°C to 52°C^* . This means your air conditioner will continue to operate when you need it most.

*SUZ-M25-71, PUZ-ZM100-140 & PUZ-RP170-200 models only.



Heat Exchanger

Multi row heat exchanger for highly efficient transfer, for rapid heating and cooling of your home.



Cleaning-Free Pipe Re-use Technology^{*1}

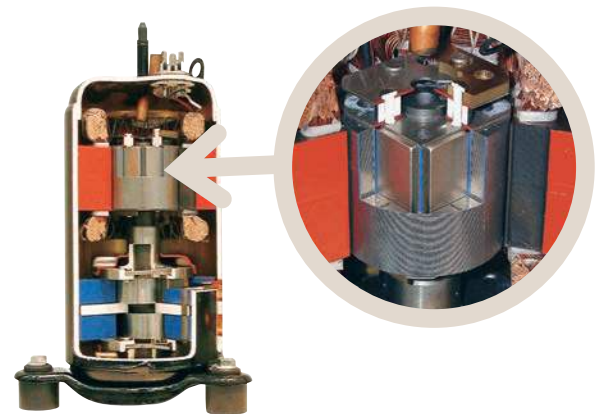
The Mitsubishi Electric clean free piping re-use technology allows the re-use of existing refrigerant pipe^{*2} which may reduce the installation costs by eliminating the need to replace existing pipework. The system is fitted with a 'wide strainer' which captures iron particles and prevent them from entering the outdoor unit.

*1 Please contact your local dealer for details.

*2 This feature is available with SUZ-M, PUZ-ZM, PUZ-M and PUZ-RP170/200.

Indoor Unit DC Fan Motor

Efficiency of the DC motor is much higher than an equivalent AC motor. The closed type design conceals the electrical windings which increases safety.



Outdoor Unit DC Scroll Compressor

Compressors can be described as the heart of an air conditioner, that pump the refrigerant around the system which heats or cools your home. Mitsubishi Electric utilises DC scroll compressors with the addition of a frame compliance mechanism, this technology reduces the internal friction of the compressor which increases its overall efficiency.

Fan Speed & ESP

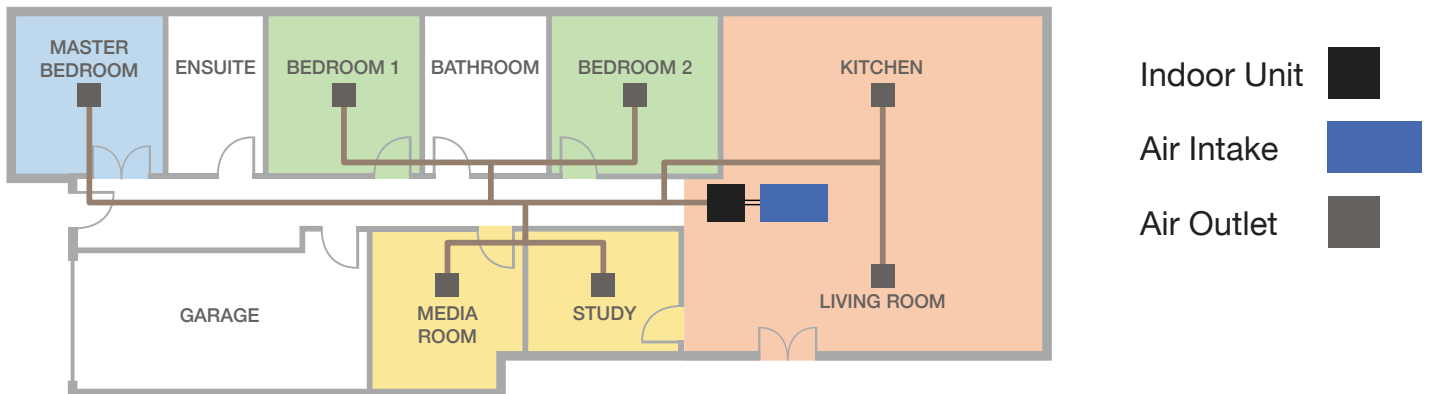
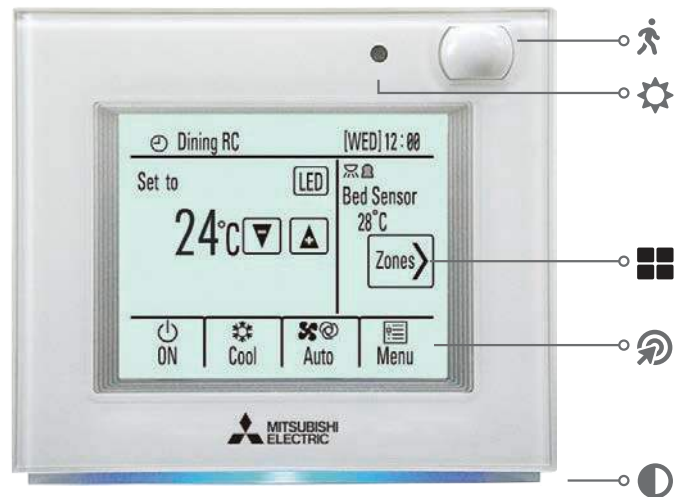
Multiple choices of static pressure allowing settings for ducted systems flexibility of airflow volume.

Zone Controller

What is Zoning?

Zoning is the ability to turn off a section of your ducted air conditioning system when not in use.

The Mitsubishi Electric Zone Controller expands functionality, delivering conditioned air where you want it in the home/office. With the ability of creating up to 4 or 8 separate zones, why condition air in unoccupied areas?



Up to 4 or 8 Zones

The Zone Controller makes it possible to distribute conditioned air to where you need it in your home/office. With the ability of creating up to 4 or 8 separate zones, there is no need to condition air in unoccupied rooms. Unoccupied spaces can be prevented from receiving airflow, reducing power consumption in unnecessary areas.

Weekly Timer

Zone Controller allows setting weekly schedule for unit On/Off, modes, set temperature and also zones On/Off. Up to eight operation patterns can be scheduled for each day.

LED Indicator

A colour band indicates the operating mode or can be configured to other settings. i.e. Off/Temperature/Colour preference.

Touch Panel

A 4.3" easy to use touch panel with backlight.

Brightness Sensor

Day and time settings can be combined with the brightness sensor to automatically turn the air conditioner off when lights are switched off.

Occupancy Sensor

If motion is undetected the air conditioner switches to energy saving mode.

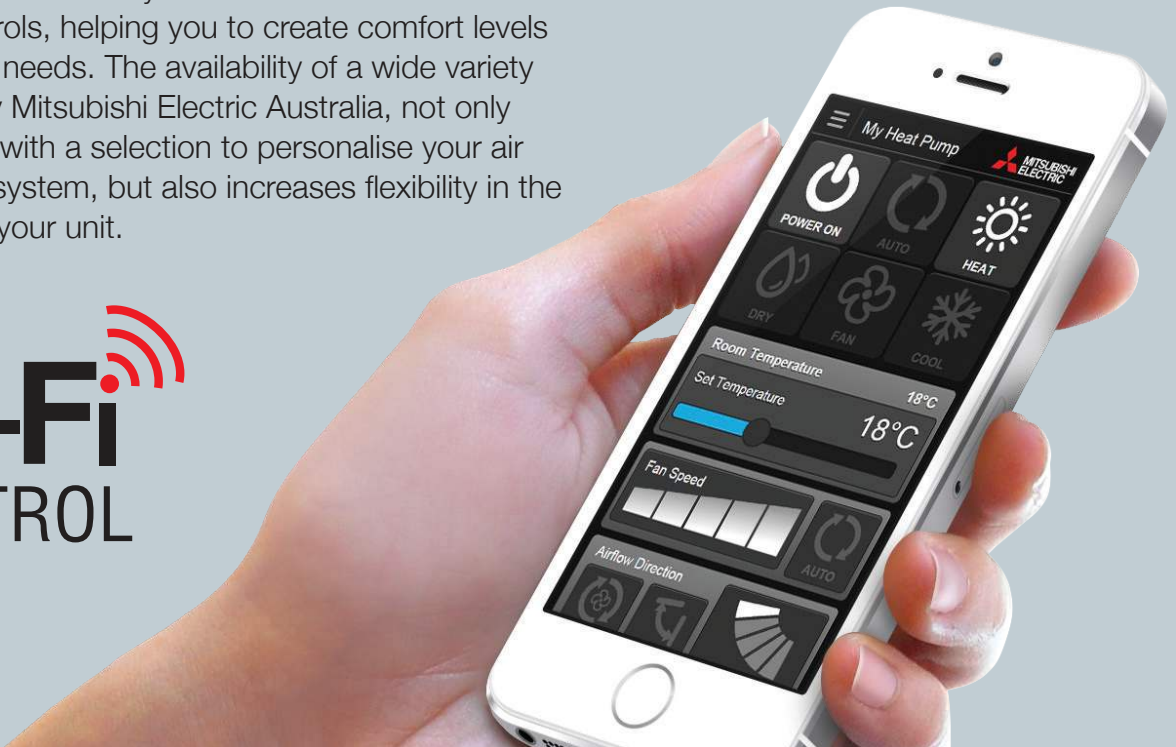
Averaging Sensor Control (Optional)

Zone Controller allows having 4 sensors in the system. Control of the unit is based on averaging of the sensors of the active zone.

Control your Comfort

Making the most out of your air conditioner all starts with the controls, helping you to create comfort levels that suit your needs. The availability of a wide variety of controls by Mitsubishi Electric Australia, not only provides you with a selection to personalise your air conditioning system, but also increases flexibility in the way you use your unit.

Wi-Fi
CONTROL



Wi-Fi Control^{*1}

Unlock the door to smarter heating and cooling systems through your Split and Ducted systems, for total home comfort. This innovative technology connects your Mitsubishi Electric air conditioner to your smartphone, tablet or online account, giving you the freedom to fully control each unit on-the-go via an internet connection from anywhere in the world.

Features:

- Adjusting set temperature
- Changing mode
- Fan speed
- Auto-Off
- Zone Control

Voice Control

Mitsubishi Electric air conditioning systems connected with Wi-Fi Control^{*1} are now Amazon Alexa^{*2} and Google Assistant^{*3} enabled. This means you can enjoy hands-free control.

^{*1} Optional Wi-Fi adapter required per unit.

Requires an internet connection and the App downloaded on your smartphone or tablet with the latest operation system available.

^{*2} To use Amazon Alexa to control your air conditioner you will need an Amazon Alexa Echo device.

^{*3} To use Google Assistant to control your air conditioner you will need a Google Home Smart speaker.

Develop Operating Rules

Tailor your system to always meet your needs and unlock the full potential of your air conditioner. Program your system to automatically turn On/Off at specific times, change settings, and develop temperature rules to ensure superior comfort day after day.

Control Multiple Units

Customise the settings of each air conditioner in your home. Purchase multiple adaptors to manage all air conditioners independently on the same account, to ensure complete control over your system. The result is a tailored system to your needs.





PAR-40MAA

7 Day Wired Controller

PAR-40MAA

A large easy to read display with backlit LCD.

Features:

- Weekly timer – 8 patterns up to 7 days
- Auto-off timer
- Temperature range restriction – Limit minimum and maximum to prevent over heating/cooling
- Operation lock
- Multi Language (EN/FR/DE/ES/IT/PT/SV/RU)



PAR-SL97A-E PAR-SL100A-E

Handheld Controllers

PAR-SL97A-E | PAR-SL100A-E

With an easy to read display and a variety of operating modes at the touch of a button. This controller features a weekly and 24 hour timer, On/Off timer to set operating times on a daily basis. The 'i-Save' mode recalls the preset temperature.

Features:

- 24 hour timer
- Mode and fan speed selection
- i-Save mode
- Fan Speed

*Optional receiver PAR-SA9CA-E required.



PAR-CT01MAA-PB

Bluetooth* Touch Screen Controller

PAR-CT01MAA-S/SB/PB

A full colour 3.5" touch LCD display suitable for both residential and commercial applications. Remote controller can communicate with smartphone or tablet device via Bluetooth Low Energy (BLE).

Features:

- Logo/photo image customisation
- White or Premium Black finishes
- 180 colour patterns available
- Customisable display
- Multilingual support: The smartphone app can be displayed in the language that the user's smartphone is set to

*Available for PAR-CT01MAA-SB and PAR-CT01MAA-PB.

Outdoor Units



Inverter

SUZ-M Series

- Capacity Range: 2.5/3.5/5.0/6.0/7.1kW
- Single Phase only

SUZ-M Series outdoor units are now available in R32 refrigerant, making it more energy efficient compared to previous R410A models. Ideal for residential and light commercial applications. i.e. shop front applications, SUZ-M Series works with a broad range of indoor units, perfect for many interior designs.

Compact Design

The compact design allows the SUZ-M Series units to be more versatile, with the ability to fit into small spaces where limited room is an issue.

Easier Transportation & Installation

The SUZ-M50 has an 18% reduction in height and a 24% reduction in weight, compared to the previous model. Facilitating easier transportation and installation.

Guaranteed Operating Range

-10°C to 52°C (Cooling), -10°C to 24°C (Heating) (SUZ-M25-35).
-15°C to 52°C (Cooling), -15°C to 24°C (Heating) (SUZ-M50-71).
Continue to operate when you need it most.





Inverter

PUZ-M Series

- Capacity Range: 10.0/12.5/14.0kW
- Single Phase only

Compact Design

With a new compact design that is suitable for tighter spaces, installation is more flexible and less obtrusive. The compact nature of the PUZ-M Series also makes transportation and handling easier. (Models PUZ-M100/125 only)

R32

R32 enables increased energy efficiency compared to R410A, with just one third of the global warming potential, the risk of environmental harm is greatly reduced.

Full Inverter

The Full Inverter ensures a high level of performance, including the finer control of operation frequency. As a result, improved power management is applied in all heating/cooling ranges and improved comfort is achieved while consuming less energy.

Guaranteed Operating Range

-5°C* to 46°C (Cooling), -15°C* to 21°C (Heating).
Continue to operate when you need it most.

*Optional air protection guide is required where ambient temperature is lower than -5°C.



Power Inverter

PUZ-ZM Series

- Capacity Range: 7.1*/10.0/12.5/14.0kW
- Single & Three Phase

Ideal for larger homes or medium to large offices, the Power Inverter boasts all of the technological advances of the Compact Inverter with further design features that reduce power consumption and make it ideally suited to commercial applications.

Energy Efficiency

Mitsubishi Electric developed the unique 'Poki-Poki motor' in Japan. This innovative motor operates based on high density, high magnetic force, leading to high efficiency and reliability. Utilising the DC motor driving the outdoor unit, efficiency is much higher than an equivalent AC motor. One of the most energy efficient combinations in the market.

*ZM Series with the GAA Indoor based on AEER and COP values.

Guaranteed Operating Range

-5°C to 52°C (Cooling), -20°C to 21°C (Heating).
Continue to operate when you need it most.

*7.1kW is single phase only.





R410A Power Inverter

PUZ/HZ-RP Series

- Capacity Range: 16.0/18.9/22.0kW
- Single & Three Phase. (18.9/22.0kW Three Phase only)

Mitsubishi Electric Inverters meet the needs of homes, shops and offices with the ability to select the model to best match your requirements.

The maximum operating heating/cooling capacity of the Mr. Slim Power Inverter units has improved (compared to previous non-inverter models) when operating in either low or high outdoor temperatures. With a wider performance range, operation is now possible at lower speeds. Comfort is improved while power consumption is reduced.

Cleaning-Free Pipe Re-Use Technology*

The Mitsubishi Electric clean free piping re-use technology allows the re-use of existing refrigerant pipe which may reduce the installation costs by eliminating the need to replace existing pipework. The system is fitted with a 'wide strainer' which captures iron particles and prevent them from entering the outdoor unit.

Energy Efficiency

Mitsubishi Electric Inverters ensure a high level of performance, with incremental control of operation frequency. As a result, an optimised level of power can be applied in all heating/cooling ranges, and improved comfort is achieved.

Guaranteed Operating Range

-5°C to 52°C (Cooling), -20°C to 21°C (Heating) (PUZ-RP170/200).
-5°C to 46°C (Cooling), -20°C to 15.5°C (Heating) (PUHZ-RP250).
Continue to operate when you need it most.

*Please contact your local dealer for details.

Indoor Units



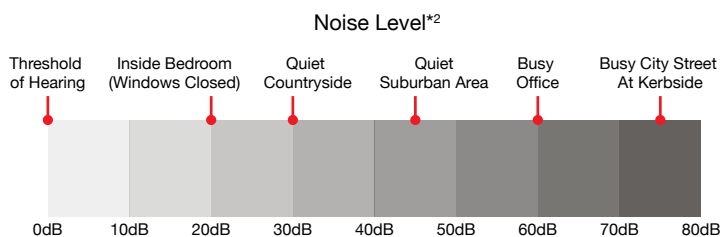
SEZ-M Series

Bulkhead

- Capacity Range: 2.5/3.5/5.0/6.0/7.1kW
- Unit Height: 200mm
- External Static Pressure: 5/15/35/50Pa
- Designed for homes, offices, restaurants and shops

Impressively Quiet

With the sound of rustling leaves measuring at 20dB, the Mitsubishi Electric SEZ Series (25/35 models) offers impressively quiet operation at a hushed 23dB*¹; ensuring a calm and comfortable environment.



*¹ The sound level for SEZ - is measured in an anechoic chamber.

*² Source: NSW EPA.

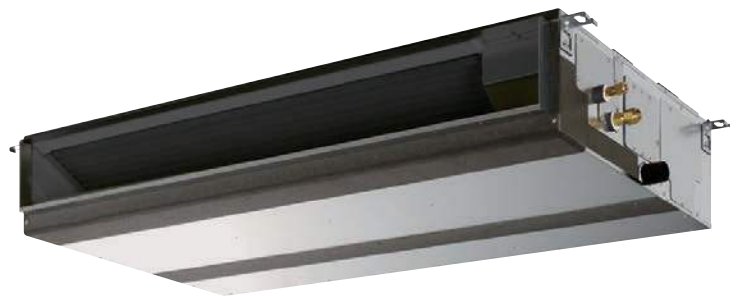
DC Fan Motor

Efficiency of the DC motor is much higher than an equivalent AC motor. The closed type design conceals the electrical windings which increases safety.

Discreet Design

The Mitsubishi Electric compact design requires minimal space with a height of only 200mm, ideal for installation in buildings with lower ceilings. The design allows for discreet installation with the air intake and outlet grilles visible maintaining your home or office with clean lines for interior décor.





PEAD-M Series

Low Profile Mid-Static Ceiling Concealed

- Capacity Range: 5.0/6.0/7.1/10.0/12.0/14.0kW
- Unit Height: 250mm
- Lightweight for ease of installation
- Built-in condensate pump

For elegance and style, the PEAD Series compliments the room environment with an aesthetically pleasing ceiling installation and high-pressure static fan.

Compact Design

The height of the PEAD Series (5.0kW-14.0kW) has been unified to 250mm making installation possible in low ceilings with minimal clearance space. It has variable airflow settings to establish the best operation to match different room layouts. The drainage pump lift is 700mm from the lower surface of the indoor units main body. The solution for low ceiling space, as low as 250mm.

Wide Selection of Fan Speeds and External Static Pressure

The PEAD Series has five-stage external static pressure conversions and three fan speed options, giving you flexibility in comfort options. PEAD Series is designed for human comfort in mind and can be installed in a wide range of building types with broad static pressures requirements ranging from 35 to 125Pa.

*Application dependent on site conditions.



PEA-M GAA Series

- Capacity Range: 10.0/12.5/14.0kW
- Unit Dimensions (mm): 1,400 (W) x 634 (D) x 400 (H)
- External Static Pressure: 50/100/150Pa

The GAA Series is a range of high static pressure units, with increased variation in airflow options.

Flexibly in Design

A flexible duct design and increased variation in airflow options allow operation that best matches room layouts. It is possible to adjust distance between air intake and outlets for optimal airflow. With high static pressures (150Pa), GAA Series units are applicable to a wide range of building types and applications.

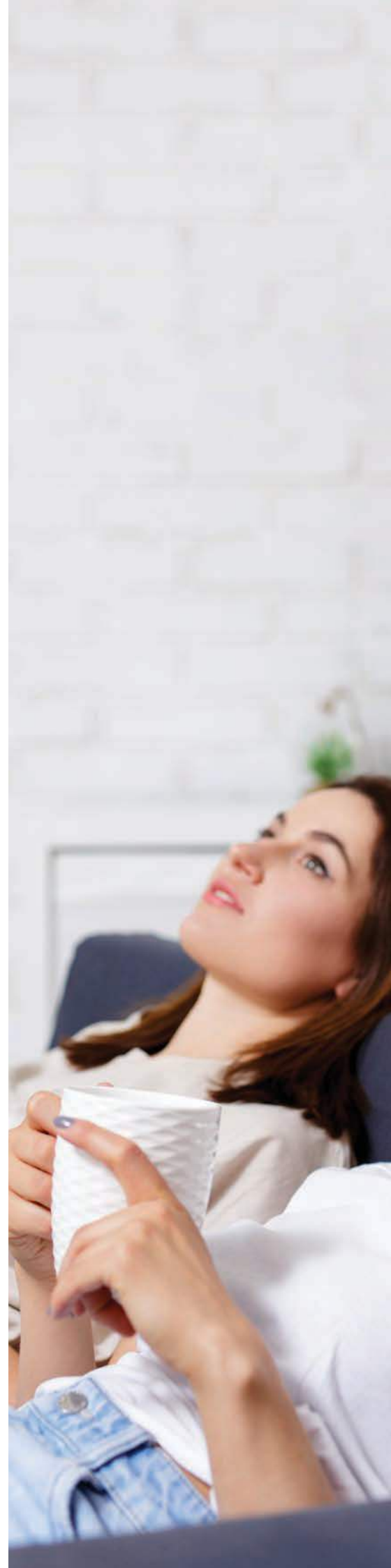


PEA-RP WJA/WHA Series

- Capacity Range: WJA 16.0/18.9kW WHA 22.0kW
 - Unit Dimensions (mm): 1,370 (W) x 1,120 (D) x 470 (H)
 - R410A
 - External Static Pressure: 60/75/100/150Pa
-

2 Piece Construction

This ducted fan coil has a two-piece construction, which allows for the separation of the indoor unit heat exchanger and the fan deck assembly. This is beneficial for installation into the roof space, for greater room capacities and increased variation in airflow; ensuring operation that suits most room layouts.





PEA-M HAA Series

2 Piece Construction

- Capacity Range: 10.0/12.5/14.0kW
- Unit Dimensions (mm): 1,405 (W) x 900 (D) x 380 (H)
- External Static Pressure: 50/100/150Pa

Ease of Installation

The indoor unit can be separated into the fan deck and heat exchanger for ease of transportation and installation into ceiling space. Ideal for the re-modelling of existing homes into roof trusses, thanks to the two-piece construction.

Ease of Maintenance

With 2-way maintenance access, regular maintenance is easy. Even when the unit is installed near the ceiling and inaccessible from the bottom, the unit is accessible from another side.

Wide Selection of Fan Speeds and External Static Pressure

The HAA Series models incorporate three-stage external static pressure conversions and four fan speed selections, offering the ultimate in comfort solutions. The HAA Series incorporate three-stage external static pressure conversions and four fan speed selections, offering the ultimate in comfort solutions. HAA Series units are designed for human comfort and to be installed in a wide range of building types with broad static pressures requirements ranging from 50 to 150Pa.

*Application dependent on site conditions.

Functions List

Category	Combination	Ducted								
	Indoor Unit	SEZ-M 25/35/50/60/71	PEAD-M50/60/ 71-JAAD	PEAD-M71/100/ 125/140JAAD	PEA-M100/ 125/140GAA	PEADM71/100/ 125/140JAAD	PEA-M100/ 125/140GAA	PEA-M100/ 125/140HAA	PEA-RP170/ 200WJA	PEA-RP 250WHA
	Outdoor Unit	SUZ-M	SUZ-M	PUZ-M	PUZ-M	PUZ-ZM	PUZ-ZM	PUZ-ZM	PUZ-RP	PUHZ-RP
Technology	DC Inverter	●	●	●	●	●	●	●	●	●
	Reluctance DC Rotary Compressor	●	●	71	-	71	-	-	-	-
	Highly Efficient DC Scroll Compressor	●	●	-	-	100-140	100-140	-	●	●
	DC Fan Motor	●	●	●	●	●	●	●	●	●
	Vector-Wave Eco Inverter	-	-	●	●	●	●	●	●	●
	PAM (Pulse Amplitude Modulation)	●	●	●	●	●	●	●	-	-
	Power Receiver and Twin LEV Control	-	-	●	●	●	●	●	-	-
	Grooved Piping	●	●	●	●	●	●	●	●	●
Energy Saving	Demand Function	-	-	○	○	○	○	○	○	○
	Demand Response Capable	●	●	●	●	●	●	●	●	●
Quality	Long-Life Filter	-	●	●	-	●	-	-	-	-
	Filter Check Signal	-	●	●	-	●	-	-	-	-
	Auto Fan Speed Mode	●	-	-	-	-	-	-	-	-
Convenience	On/Off Operation Timer	●	●	●	●	●	●	●	●	●
	Auto Change Over	●	●	●	●	●	●	●	●	●
	Auto Restart	●	●	●	●	●	●	●	●	●
	Low-Temperature Cooling	●	●	●	●	●	●	●	●	●
	Low-Noise Operation (Outdoor Unit)	-	●	●	●	●	●	●	●	●
	PAR-40MAA-J Control	○	○	○	○	○	○	○	○	○
System Control	PAC-YT52CRA Control	○	○	○	○	○	○	○	○	○
	Centralised On/Off Control	○	○	○	○	○	○	○	○	○
	System Group Control	○	○	○	○	○	○	○	○	○
	M-NET Connection	○	○	○	○	○	○	○	○	○
Installation	Cleaning-Free Pipe Re-Use	●	●	●	●	●	●	●	●	●
	Reuse of Existing Wiring	-	-	○	○	○	○	○	○	○
	Drain Pump	○	○	●	-	●	-	-	-	-
	Pump Down Switch	-	-	●	●	●	●	●	●	●
	Flare Connection	●	●	●	●	●	●	●	●	●
Maintenance	Self-Diagnosis Function (Check Code Display)	●	●	●	●	●	●	●	●	●
	Failure Recall Function	●	●	●	●	●	●	●	●	●

● Standard ○ Optional - Not Available

Product Specifications



SEZ-M Series (Bulkhead)									
Indoor Unit		SEZ-M25DA(L)	SEZ-M35DA(L)	SEZ-M50DA(L)	SEZ-M60DA(L)	SEZ-M71DA(L)			
Outdoor Unit		SUZ-M25VAD-A	SUZ-M35VAD-A	SUZ-M50VAD-A	SUZ-M60VAD-A	SUZ-M71VAD-A			
Refrigerant		R32							
Power Supply		V:230V, Single-phase, 50 Hz							
Cooling	Capacity [Min-Rated-Max]	kW	1.50 - 2.50 - 3.30	1.50 - 3.50 - 4.00	2.30 - 5.00 - 6.30	2.30 - 6.00 - 6.50	2.80 - 7.10 - 8.30		
	Total Input [Rated]	kW	0.70		1.01	1.40	1.73	2.14	
	AEER/EER		3.45/3.57		3.39/3.46	3.51/3.57	3.41/3.46	3.27/3.31	
	AEER [Part-load %] ^{*1}		-		-	-	-	-	
	Running Current [Rated] ^{*2}	A	3.70		4.70	6.40	7.60	9.40	
	Sound Pressure Level	In (Lo-Mid-Hi)	dB(A)	23 - 26 - 30		23 - 28 - 33	30 - 34 - 37	30 - 34 - 38	30 - 35 - 40
		Out (PWL)	dB(A)	45 (59)		48 (62)	48 (64)	49 (65)	49 (66)
Air Volume (In) Lo-Mid-Hi	L/S	92 - 117 - 150		117 - 150 - 183	167 - 208 - 250	200 - 250 - 300	200 - 267 - 333		
Heating	Capacity [Min-Rated-Max]	kW	1.30 - 3.00 - 4.20	1.30 - 4.00 - 5.00	1.70 - 6.00 - 7.20	2.50 - 7.00 - 8.00	2.60 - 8.00 - 10.40		
	Total Input [Rated]	kW	0.87		1.11	1.66	2.00	2.22	
	ACOP/COP ^{*3}		3.35/3.44		3.53/3.60	3.57/3.61	3.45/3.50	3.55/3.60	
	ACOP [Part-load %] ^{*1}		-		-	-	-	-	
	Running Current [Rated] ^{*3}	A	4.30		5.00	7.50	8.70	9.70	
	Sound Pressure Level	In (Lo-Mid-Hi)	dB(A)	23 - 26 - 30		23 - 28 - 33	30 - 34 - 37	30 - 34 - 38	30 - 35 - 40
		Out (PWL)	dB(A)	46 (59)		48 (63)	49 (66)	51 (68)	
Air Volume (In) Lo-Mid-Hi	L/S	92 - 117 - 150		117 - 150 - 183	167 - 208 - 250	200 - 250 - 300	200 - 267 - 333		
Max. Running Current	A	4.30		5.00	7.50	8.70	9.70		
Indoor Unit	Input [Rated]	kW	0.04		0.05	0.07		0.10	
	Dimensions [HxWxD]	mm	200 x 790 x 700		200 x 900 x 700		200 x 1190 x 700		
	Weight [Panel]	kg	17.5		21.0	22.0	25.5		
	Static Pressure	Pa	5/15/35/50						
Outdoor Unit	Dimensions [HxWxD]	mm	550 x 800 x 285		714 x 800 x 285	880 x 840 x 330			
	Weight	kg	30.0		35.0	41.0	54.0	55.0	
	Max. Running Current	A	6.80		8.50	13.50	14.80	14.80	
	Breaker Size	A	10		20				
Ext. Piping	Diameter [Liquid/Gas]	mm	ø6.35/ø9.52		ø6.35/ø12.70	ø6.35/ø15.88	ø9.52/ø15.88		
	Max. Length/Height	m	20/12		30/30				
Guaranteed Operating Range [Outdoor]	Cooling ^{*2}	°C	-10 ~ 52		-15 ~ 52				
	Heating	°C	-10 ~ 24		-15 ~ 24				
Supply Air Duct	mm	150 x 660		150 x 860		150 x 1060			
Pre-Charge Refrigerant	kg	0.65 (7m)		0.90 (7m)	1.20 (7m)	1.25 (7m)	1.45 (7m)		
Additional Refrigerant	g/m	20					40		

*1 MEPS compliant at part load.

Rating Conditions:

*2 Cooling: Indoor 27°C, D.B./19°C, W.B.
Outdoor 35°C, D.B./24°C, W.B.

*3 Heating: Indoor 20°C, D.B./15°C, W.B.
Outdoor 7°C, D.B./6°C, W.B.

Product Specifications



PEAD-M Series (Ceiling Concealed)										
Indoor Unit		PEAD-M50JAA(D)	PEAD-M60JAA(D)	PEAD-M71JAA(D)	PEAD-M100JAA(D)	PEAD-M125JAA(D)	PEAD-M140JAA(D)			
Outdoor Unit		SUZ-M50VAD-A	SUZ-M60VAD-A	SUZ-M71VAD-A	PUZ-M100VKA	PUZ-M125VKA	PUZ-M140VKA			
Refrigerant		R32								
Power Supply		V:230V, Single-phase, 50 / 60 Hz			V:230V, Single-phase, 50 Hz					
Cooling	Capacity [Min-Rated-Max]	kW	2.30 - 5.00 - 6.20	2.30 - 6.00 - 6.50	2.80 - 7.10 - 8.10	4.00 - 10.00 - 10.60	6.00 - 12.00 - 13.50	6.20 - 14.00 - 15.30		
	Total Input [Rated]	kW	1.33	1.72	1.98	3.06	3.83	4.40		
	AEER/EER		3.70/3.75	3.43/3.48	3.53/3.58	3.13/3.26	3.03/3.13	3.09/3.18		
	AEER [Part-load %]* ¹		-	-	-	4.40	3.78	4.01		
	Running Current [Rated]* ³	A	6.00	7.50	8.70	14.10	17.80	20.40		
	Sound Pressure Level	In (Lo-Mid-Hi)	dB(A)	30 - 35 - 39	30 - 32 - 36	30 - 33 - 38	33 - 38 - 42	36 - 40 - 44	40 - 44 - 49	
		Out (PWL)	dB(A)	48 (64)	49 (65)	49 (66)	52 (71)	54 (72)	53 (71)	
Air Volume (In) Lo-Mid-Hi	L/S	200 - 242 - 283	242 - 300 - 350	292 - 350 - 417	400 - 483 - 567	492 - 592 - 700	533 - 650 - 767			
Heating	Capacity [Min-Rated-Max]	kW	1.70 - 6.00 - 7.40	2.80 - 7.00 - 8.00	2.60 - 8.00 - 10.20	2.80 - 12.50 - 12.50	4.10 - 14.00 - 15.50	5.70 - 16.00 - 18.00		
	Total Input [Rated]	kW	1.44	1.85	2.00	3.35	3.68	4.30		
	ACOP/COP		4.09/4.16	3.72/3.78	3.93/4.00	3.59/3.73	3.67/3.80	3.61/3.72		
	ACOP [Part-load %]* ¹		-	-	-	-	-	-		
	Running Current [Rated]* ⁴	A	6.40	8.10	8.80	16.50	17.10	20.00		
	Sound Pressure Level	In (Lo-Mid-Hi)	dB(A)	30 - 35 - 39	30 - 32 - 36	30 - 33 - 38	33 - 38 - 42	36 - 40 - 44	40 - 44 - 49	
		Out (PWL)	dB(A)	49 (66)	51 (68)	51 (68)	54 (72)	56 (74)	54 (72)	
Air Volume (In) Lo-Mid-Hi	L/S	200 - 242 - 283	242 - 300 - 350	292 - 350 - 417	400 - 483 - 567	492 - 592 - 700	533 - 650 - 767			
Max. Running Current	A	13.50	14.80	14.80	29.00	29.30	29.64			
Indoor Unit	Input [Rated]	kW	0.11/0.09	0.12/0.10	0.17/0.15	0.25/0.23	0.36/0.34	0.39/0.37		
	Dimensions [HxWxD]	mm	250 x 900 x 732	250 x 1100 x 732		250 x 1400 x 732		250 x 1600 x 732		
	Weight	kg	26.0	29.0	29.0	39.0	40.0	44.0		
	Static Pressure	Pa	35/50/70/100/125							
Outdoor Unit	Dimensions [HxWxD]	mm	714 x 800 x 285	880 x 840 x 330	880 x 840 x 330	981 x 1050 x 330 (+40)		1338 x 1050 x 330 (+40)		
	Weight	kg	41.0	54.0	55.0	76.0	84.0	99.0		
	Breaker Size	A	20	20	20	32	32	40		
Ext. Piping	Diameter [Liquid/Gas]	mm	ø6.35/ø12.70	ø6.35/ø15.88	ø9.52/ø15.88	ø9.52/ø15.88				
	Max. Length/Height	m	30/30			55/30				
Guaranteed Operating Range [Outdoor]	Cooling* ²	°C	-15 ~ 52			-5(-15) ~ 46				
	Heating	°C	-15 ~ 24			-15 ~ 21				
Supply Air Duct	mm	860 x 178	1060 x 178	1060 x 178	1360 x 178	1360 x 178	1560 x 178			
Pre-Charge Refrigerant	kg	1.20 (7m)	1.25 (7m)	1.45 (7m)	3.10 (30m)	3.60 (30m)	4.00 (55m)			
Additional Refrigerant	g/m	20			40	200		-		

*1 MEPS compliant at part load.

*2 With the optional air protection guide, cooling operation at -15°C outdoor temperature is possible (excluding SUZ outdoor units).

Rating Conditions:

*3 Cooling: Indoor 27°C, D.B./19°C, W.B.

Outdoor 35°C, D.B./24°C, W.B.

*4 Heating: Indoor 20°C, D.B./15°C, W.B.

Outdoor 7°C, D.B./6°C, W.B.



PEAD-ZM Series (Ceiling Concealed)											
Indoor Unit		PEAD-M71JAA(D)	PEAD-M100JAA(D)			PEAD-M125JAA(D)		PEAD-M140JAA(D)			
Outdoor Unit		PUZ-ZM 71VHA-A	PUZ-ZM 100VKA	PUZ-ZM 100YKA2-A	PUZ-ZM 125VKA	PUZ-ZM 125YKA	PUZ-ZM 140VKA	PUZ-ZM 140YKA			
Refrigerant		R32									
Power Supply		V:230V, Single-phase, 50Hz Y:400V, Three-phase, 50Hz									
Cooling	Capacity [Min-Rated-Max]	kW	3.30 - 7.10 - 8.10	4.90 - 10.00 - 11.40			5.50 - 12.50 - 14.00		6.20 - 14.00 - 15.30		
	Total Input [Rated]	kW	1.85	2.67	2.67	3.66		4.37			
	AEER/EER		3.63/3.83	3.60/3.74	3.54/3.74	3.32/3.41	3.28/3.41	3.13/3.20	3.09/3.20		
	AEER [Part-load %] ^{*1}		-	-	-	-	-	4.20	4.09		
	Running Current [Rated] ^{*3}	A	10.33	12.20	4.53	16.70	6.40	19.77	7.40		
	Sound Pressure Level	In (Lo-Mid-Hi)	dB(A)	30 - 34 - 39	33 - 38 - 42			36 - 40 - 44		40 - 44 - 49	
		Out (PWL)	dB(A)	47 (67)	49 (69)	49 (69)	50 (70)		50 (70)		
Air Volume (In) Lo-Mid-Hi	L/S	292 - 350 - 417	400 - 483 - 567			492 - 592 - 700		533 - 650 - 767			
Heating	Capacity [Min-Rated-Max]	kW	3.50 - 8.00 - 10.20	4.50 - 11.20 - 14.00			5.10 - 14.00 - 16.00		5.70 - 16.00 - 18.00		
	Total Input [Rated]	kW	1.93	2.80	2.80	3.52		4.18			
	ACOP/COP		3.93/4.14	3.86/4.00	3.79/4.00	3.86/3.97	3.81/3.97	3.73/3.82	3.69/3.82		
	Running Current [Rated] ^{*4}	A	8.80	12.70	4.76	16.00	6.20	18.80	7.10		
	Sound Pressure Level	In (Lo-Mid-Hi)	dB(A)	30 - 34 - 39	33 - 38 - 42			36 - 40 - 44		40 - 44 - 49	
		Out (PWL)	dB(A)	51 (70)	51 (69)	51 (69)	52 (70)		52 (71)		
	Air Volume (In) Lo-Mid-Hi	L/S	292 - 350 - 417	400 - 483 - 567			492 - 592 - 700		533 - 650 - 767		
Max. Running Current	A	20.28	29.18	13.18	29.90	13.90	31.10	14.10			
Indoor Unit	Input [Rated]	kW	0.17/0.15	0.25/0.23			0.36/0.34		0.39/0.37		
	Dimensions [HxWxD]	mm	250 x 1100 x 732	250 x 1400 x 732			250 x 1400 x 732		250 x 1600 x 732		
	Weight	kg	30.0	39.0			40.0		44.0		
	Static Pressure	Pa	35/50/70/100/125								
Outdoor Unit	Dimensions [HxWxD]	mm	943 x 950 x 300 (+25)	1338 x 1050 x 330 (+40)							
	Weight	kg	70.0	111.0	112.0	111.0	112.0	111.0	112.0		
	Breaker Size	A	25	32	16	32	16	40	16		
Ext. Piping	Diameter [Liquid/Gas]	mm	ø9.52/ø15.88								
	Max. Length/Height	m	50/30	75/30							
Guaranteed Operating Range [Outdoor]	Cooling ^{*2}	°C	-5 (-15) ~ 52								
	Heating	°C	-20 ~ 21								
Supply Air Duct	mm	1060 x 178	1360 x 178				1560 x 178				
Pre-Charge Refrigerant	kg	2.80 (30m)	4.00 (30m)								
Additional Refrigerant	g/m	40									

*1 MEPS compliant at part load.

*2 With the optional air protection guide, cooling operation at -15°C outdoor temperature is possible.

Rating Conditions:

*3 Cooling: Indoor 27°C, D.B./19°C, W.B.
Outdoor 35°C, D.B./24°C, W.B.

*4 Heating: Indoor 20°C, D.B./15°C, W.B.
Outdoor 7°C, D.B./6°C, W.B.

Product Specifications



PEA-M/ZM Series (Ceiling Concealed)											
Indoor Unit		PEA-M100GAA			PEA-M125GAA			PEA-M140GAA			
Outdoor Unit		PUZ-M 100VKA	PUZ-ZM 100VKA	PUZ-ZM 100YKA2-A	PUZ-M 125VKA	PUZ-ZM 125VKA	PUZ-ZM 125YKA	PUZ-M 140VKA	PUZ-ZM 140VKA	PUZ-ZM 140YKA	
Refrigerant		R32									
Power Supply	Source	Outdoor power supply									
	Outdoor	V: 230V, Single-phase, 50Hz	V: 230V, Single-phase, 50Hz Y: 400V, Three-phase, 50Hz	V: 230V, Single-phase, 50Hz	V: 230V, Single-phase, 50Hz Y: 400V, Three-phase, 50Hz	V: 230V, Single-phase, 50Hz	V: 230V, Single-phase, 50Hz Y: 400V, Three-phase, 50Hz	V: 230V, Single-phase, 50Hz	V: 230V, Single-phase, 50Hz Y: 400V, Three-phase, 50Hz	V: 230V, Single-phase, 50Hz	
	Indoor	-									
Cooling	Capacity [Min-Rated-Max]	kW	4.00 - 10.00 - 10.60	4.90 - 10.00 - 11.40	4.90 - 10.00 - 11.40	6.00 - 12.00 - 13.50	5.50 - 12.50 - 14.00	5.50 - 12.50 - 14.00	6.20 - 14.00 - 15.30	6.20 - 14.00 - 15.30	6.20 - 14.00 - 15.30
	Total Input [Rated]	kW	3.08	2.39	2.39	3.81	3.52	3.52	4.22	4.10	4.10
	AEER/EER		3.12/3.24	4.01/4.18	3.93/4.18	3.04/3.14	3.45/3.55	3.40/3.55	3.22/3.31	3.33/3.41	3.29/3.41
	AEER [Part-load %]*1		4.40	-	-	3.83	-	-	-	-	-
	Running Current [Rated]*4	A	14.50	11.30	4.05	18.50	16.00	5.20	20.40	18.70	6.10
	Sound Pressure Level	In (Lo-Mid-Hi)	dB(A)	33 - 38 - 42	39 - 42			42 - 45			
		Out (PWL)	dB(A)	52 (71)	49 (69)	49 (69)	54 (72)	50 (70)	50 (70)	53 (71)	50 (70)
Air Volume (In) Lo-Mid-Hi	L/S	567 - 700				800 - 1000					
Heating	Capacity [Min-Rated-Max]	kW	2.80 - 12.50 - 12.50	4.50 - 11.20 - 14.00	4.50 - 11.20 - 14.00	4.10 - 14.00 - 15.50	5.00 - 14.00 - 16.00	5.00 - 14.00 - 16.00	5.70 - 16.00 - 18.00	5.70 - 16.00 - 18.00	5.70 - 16.00 - 18.00
	Total Input [Rated]	kW	3.36	2.51	2.51	3.54	3.27	3.27	4.20	3.90	3.90
	ACOP/COP*3		3.72/3.58	4.28/4.46	4.21/4.46	3.95/3.81	4.15/4.28	4.09/4.28	3.80/3.69	3.99/4.10	3.95/4.10
	Running Current [Rated]*5	A	15.80	11.50	4.26	17.30	15.40	5.40	20.30	17.70	6.20
	Sound Pressure Level	In (Lo-Mid-Hi)	dB(A)	39 - 42			42 - 45				
		Out (PWL)	dB(A)	54 (72)	51 (69)	51 (69)	56 (74)	52 (70)	52 (70)	54 (72)	52 (71)
Air Volume (In) Lo-Mid-Hi	L/S	567 - 700				800 - 1000					
Max. Running Current	A	23.28	30.78	14.78	29.78	31.86	15.86	30.86	32.86	15.86	
Indoor Unit	Input [Rated]	kW	0.21/0.21			0.49/0.49					
	Dimensions [HxWxD]	mm	400 x 1400 x 634								
	Weight	kg	63.0								
	Static Pressure	Pa	50/100/150								
Outdoor Unit	Dimensions [HxWxD]	mm	981 x 1050 x 330 (+40)	1338 x 1050 x 330 (+40)		981 x 1050 x 330 (+40)	1338 x 1050 x 330 (+40)				
	Weight	kg	76.0	113.0	114.0	84.0	113.0	114.0	99.0	113.0	114.0
	Breaker Size	A	32	32	16	32	32	16	40	40	16
Ext. Piping	Diameter [Liquid/Gas]	mm	ø9.52/ø15.88								
	Max. Length/Height	m	55/30	75/30		55/30	75/30		55/30	75/30	
Guaranteed Operating Range [Outdoor]	Cooling*2	°C	-5 (-15) ~ 46	-5 (-15) ~ 52		-5 (-15) ~ 46	-5 (-15) ~ 52		-5 (-15) ~ 46	-5 (-15) ~ 52	
	Heating	°C	-15 ~ 21	-20 ~ 21		-15 ~ 21	-20 ~ 21		-15 ~ 21	-20 ~ 21	
Supply Air Duct	mm	921 x 250									
Return Air Duct	mm	1102 x 330									
Pre-Charge Refrigerant	kg	3.10 (30m)	4.00 (30m)		3.60 (30m)	4.00 (30m)		4.00 (55m)	4.00 (30m)		
Additional Refrigerant	g/m	200	60		200	60		-	60		

*1 MEPS compliant at part load.

*2 With the optional air protection guide, cooling operation at -15°C outdoor temperature is possible.

*3 Rated EER/COP for PEA-RP710/200WJA/250WHA are measured at 75Pa.

* Sound pressure level for PEA-M125/140 are measured in anechoic chamber at ESP50 Pa.

Sound pressure level or PEA-RP170/200WHA/250WHA are measured in anechoic chamber at ESP150 Pa.

Rating Conditions:

*4 Cooling: Indoor 27°C, D.B./19°C, W.B.
Outdoor 35°C, D.B./24°C, W.B.

*5 Heating: Indoor 20°C, D.B./15°C, W.B.
Outdoor 7°C, D.B./6°C, W.B.



PEA-RP Series (Ceiling Concealed)							
Indoor Unit		PEA-RP170WJA		PEA-RP200WJA	PEA-RP250WHA		
Outdoor Unit		PUZ-RP170VKA	PUZ-RP170YKA	PUZ-RP200YKA	PUHZ-RP250YKM		
Refrigerant		R410A					
Power Supply	Source	Outdoor power supply			Indoor/outdoor separate power supply		
	Outdoor	V: 230V, Single-phase, 50Hz Y: 400V, Three-phase, 50Hz					
	Indoor	-			230V, Single-phase, 50Hz		
Cooling	Capacity [Min-Rated-Max]	kW	9.00 - 16.00 - 19.50	9.00 - 16.00 - 19.50	9.00 - 18.90 - 22.40	11.20 - 22.00 - 27.00	
	Total Input [Rated]	kW	4.94	4.94	5.92	6.11	
	AEER/EER		3.16/3.23	3.14/3.23	3.11/3.19	3.27/3.60	
	AEER [Part-load %]* ¹		3.77	3.73	3.75	-	
	Running Current [Rated]* ⁴	A	25.02	8.40	9.70	4.34/9.70 (Indoor/Outdoor)	
	Sound Pressure Level	In (Lo-Mid-Hi)	dB(A)	38 - 41 - 44			40 - 43 - 46
		Out (PWL)		58 (76)	58 (76)	58 (76)	78
Air Volume (In) Lo-Mid-Hi	L/S	833 - 1017 - 1200			967 - 1183 - 1400		
Heating	Capacity [Min-Rated-Max]	kW	9.50 - 20.00 - 22.40	9.50 - 20.00 - 22.40	9.50 - 22.40 - 25.00	12.50 - 25.00 - 29.00	
	Total Input [Rated]	kW	6.00	6.00	6.89	6.89	
	ACOP/COP* ³		3.26/3.33	3.25/3.33	3.18/3.25	3.37/3.62	
	Running Current [Rated]* ⁵	A	27.51	9.70	7.80	4.34/11.00 (Indoor/Outdoor)	
	Sound Pressure Level	In (Lo-Mid-Hi)	dB(A)	38 - 41 - 44			40 - 43 - 46
		Out (PWL)		59 (76)	59 (76)	59 (76)	78
Air Volume (In) Lo-Mid-Hi	L/S	833 - 1017 - 1200			967 - 1183 - 1400		
Max. Running Current	A	36.57	21.57	21.57	5.50/22.20 (Indoor/Outdoor)		
Indoor Unit	Input [Rated]	kW	0.49/0.49			0.66/0.66	
	Dimensions [HxWxD]	mm	470 x 1370 x 1120				
	Weight	kg	108.0				
	Static Pressure	Pa	60/75/100/150				
Outdoor Unit	Dimensions [HxWxD]	mm	1338 x 1050 x 330 (+40)		1650 x 920 x 740		
	Weight	kg	124.0	125.0	135.0	199.0	
	Breaker Size	A	40	32	32	32	
Ext. Piping	Diameter [Liquid/Gas]	mm	ø9.52/ø25.40		ø9.52/ø22.20		
	Max. Length/Height	m	75/30				
Guaranteed Operating Range [Outdoor]	Cooling* ²	°C	-5 (-15) ~ 52		-5 ~ 46		
	Heating	°C	-20 ~ 21		-20 ~ 15.5		
Supply Air Duct	mm	1100 x 340					
Return Air Duct	mm	1100 x 420					
Pre-Charge Refrigerant	kg	7.70 (30m)			9.00+ (0m)		
Additional Refrigerant	g/m	90			60g/m + 3kg		

*1 MEPS compliant at part load.

*2 With the optional air protection guide, cooling operation at -15°C outdoor temperature is possible.

*3 Rated EER/COP for PEA-RP710/200WJA/250WHA are measured at 75Pa.

* Sound pressure level for PEA-M125/140 are measured in anechoic chamber at ESP50 Pa.

Sound pressure level for PEA-RP170/200WHA/250WHA are measured in anechoic chamber at ESP150 Pa.

Rating Conditions:

*4 Cooling: Indoor 27°C, D.B./19°C, W.B.
Outdoor 35°C, D.B./24°C, W.B.

*5 Heating: Indoor 20°C, D.B./15°C, W.B.
Outdoor 7°C, D.B./6°C, W.B.

Product Specifications



PEA-M HAA Series (Ceiling Concealed)											
Indoor Unit		PEA-M100HAA			PEA-M125HAA			PEA-M140HAA			
Outdoor Unit		PUZ-M 100VKA-A	PUZ-ZM 100VKA-A	PUZ-ZM 100YKA2-A	PUZ-M 125VKA-A	PUZ-ZM 125VKA-A	PUZ-ZM 125YKA-A	PUZ-M 140VKA-A	PUZ-ZM 140VKA-A	PUZ-ZM 140YKA-A	
Refrigerant		R32									
Power Supply	Source	Outdoor power supply									
	Outdoor	V:230V, Single-phase, 50Hz Y:400V, Three-phase, 50Hz									
	Indoor	-									
Cooling	Capacity [Min-Rated-Max]	kW	4.00 - 10.00 - 10.60	4.90 - 10.00 - 11.40	6.00 - 12.00 - 13.50	5.50 - 12.50 - 14.00	6.20 - 14.00 - 15.30	6.20 - 14.00 - 15.30			
	Total Input [Rated]	kW	3.02	2.65	3.11	3.78	3.50	3.50	4.24	4.19	4.19
	AEER/EER		3.21/3.31	3.63/3.77	3.57/3.77	3.10/3.17	3.47/3.57	3.42/3.57	3.23/3.30	3.26/3.34	3.22/3.34
	AEER [Part-load %] ^{*1}		-	-	4.33	4.25	-	-	-	-	-
	Running Current [Rated] ^{*4}	A	13.80	12.20	5.20	17.40	15.40	5.90	19.50	18.30	6.80
	Sound Pressure Level	In (Lo-Mid2-Mid1-Hi) (SPL) ^{*3}	dB(A)	29 - 32 - 36 - 38			35 - 38 - 42 - 45				
		Out (PWL)		52 (71)	49 (69)	50 (70)	54 (72)	50 (70)	50 (70)	53 (71)	50 (70)
Air Volume (In) Lo-Mid2-Mid1-Hi	L/S ^{*3}	500 - 567 - 633 - 700			700 - 800 - 900 - 1000						
Heating	Capacity [Min-Rated-Max]	kW	2.80 - 12.50 - 12.50	4.50 - 11.20 - 14.00	4.10 - 14.00 - 15.50	5.00 - 14.00 - 16.00	5.70 - 16.00 - 18.00	5.70 - 16.00 - 18.00			
	Total Input [Rated]	kW	3.24	2.71	3.12	3.44	3.40	3.40	3.85	3.97	3.97
	ACOP/COP		3.75/3.85	3.98/4.13	3.91/4.13	3.69/4.06	3.99/4.11	3.94/4.11	4.06/4.15	3.92/4.03	3.88/4.03
	ACOP [Part-load %] ^{*1}		-								
	Running current [Rated] ^{*5}	A	14.80	12.70	5.20	16.00	15.00	5.60	17.70	17.70	6.30
	Sound Pressure Level	In (Lo-Mid2-Mid1-Hi) (SPL) ^{*3}	dB(A)	29 - 32 - 36 - 38			35 - 38 - 42 - 45				
		Out (PWL)		54 (72)	51 (69)	52 (70)	56 (74)	52 (70)	52 (70)	54 (72)	52 (71)
Air Volume (In) Lo-Mid2-Mid1-Hi	L/S ^{*3}	500 - 567 - 633 - 700			700 - 800 - 900 - 1000						
Max. Running Current	A	23.40	29.88	13.88	30.20	31.20	15.20	30.20	32.20	15.20	
Indoor Unit	Input [Rated]	kW ^{*3}	0.187/0.187			0.477/0.477					
	Dimensions [HxWxD]	mm				380 x 1405 x 900					
	Weight	kg	63.0			66.0					
	Static Pressure	Pa	50/100/150								
Outdoor Unit	Dimensions [HxWxD]	mm	981 x 1050 x 330 (+40)	1338 x 1050 x 330 (+40)	981 x 1050 x 330 (+40)	1338 x 1050 x 330 (+40)					
	Weight	kg	76.0	113.0	114.0	84.0	113.0	114.0	99.0	113.0	114.0
	Breaker Size	A	32		16	32	32	16	40	40	16
Ext. Piping	Diameter [Liquid/Gas]	mm	ø9.52/ø15.88								
	Max. Length/Height	m	55/30	75/30	55/30	75/30	55/30	75/30			
Guaranteed Operating Range [Outdoor]	Cooling ^{*2}	°C	-15 ~ 46	-5 (-15) ~ 52	-15 ~ 46	-5 (-15) ~ 52	-15 ~ 46	-5 (-15) ~ 52			
	Heating	°C	-15 ~ 21	-20 ~ 21	-15 ~ 21	-20 ~ 21	-15 ~ 21	-20 ~ 21			
Supply Air Duct	mm	1325 x 266									
Return Air Duct	mm	2 x 400 (2 x 16")									
Pre-Charge Refrigerant	kg	3.10 (30m)	4.00 (30m)	3.60 (30m)	4.00 (30m)	4.00 (30m)	4.00 (55m)	4.00 (30m)			
Additional Refrigerant	g/m	200	60	200	60	-	60				

*1 MEPS compliant at part load.

*2 With the optional air protection guide, cooling operation at -15°C outdoor temperature is possible.

*3 In case of NOT using air intake flange. With flange, please check P-Q curve on the indoor unit manual.

Rating Conditions:

*4 Cooling: Indoor 27°C, D.B./19°C, W.B. Outdoor 35°C, D.B./24°C, W.B.

*5 Heating: Indoor 20°C, D.B./15°C, W.B. Outdoor 7°C, D.B./6°C, W.B.

Guaranteed Operating Range					
		SUZ-M	PUZ-M	PUZ-ZM/RP	PUHZ
		25/35/50/60/71	100/125/140	71/100/125/140/170/200	250
Cooling	Upper Limit (DB)	52°C	46°C	52°C	46°C
	Lower Limit (DB)	-15°C	-5°C (-15°C*)	-5°C (-15°C*)	-5°C
Heating	Upper Limit (DB)	24°C	21°C	21°C	15.5°C (WB)
	Lower Limit (DB)	-15°C	-15°C	-20°C	-20°C (WB)

*With the optional air protection guide, cooling operation is possible at -15°C outdoor temperature (excluding SUZ outdoor units).

Sound Pressure Level:

- Sound pressure measurements were conducted in an anechoic chamber
- The actual noise level depends on the distance from the unit and the acoustic environment

Notes for All Specifications:

- Rating conditions (AS/NZS 3823)
 - Cooling - Indoor: 27°C DB, 19°C WB
Outdoor: 35°C DB
 - Heating - Indoor: 20°C DB
Outdoor: 7°C DB, 6°C WB
 - Refrigerant piping length (one-way): 5m
- *Above specifications are for outdoor units only.
*For PUHZ-RP250YKM: 7.5m

Total input based on the indicated voltage (Indoor/Outdoor)		
	Indoor	Outdoor
50Hz	Single-phase, 230V	Single-phase, 230V/Three-phase, 400V

Zone Controller	
Parts	Specifications
Zone Controller	<p>Make sure the correct zone controller is selected from the following 4 models.</p> <ul style="list-style-type: none"> • Maximum 4 of 24 V AC damper motor connecting type: PAC-ZC40L-E • Maximum 8 of 24 V AC damper motor connecting type: PAC-ZC80L-E • Maximum 4 of 240 V AC damper motor connecting type: PAC-ZC40H-E • Maximum 8 of 240 V AC damper motor connecting type: PAC-ZC80H-E
Zone Remote Controller	<p>A maximum of 2 remote controllers can be connected. 1 x remote controller is included in the Zone Controller. Additional remote part #: PAR-ZC01M-E.</p>
Temperature Sensors	<p>A maximum of 5 temperature sensors.</p> <ul style="list-style-type: none"> • Intake air temperature sensor in the indoor unit • Temperature sensor in the main remote controller • Temperature sensor in the sub remote controller • Optional temperature sensor 1: PAC-SE41TS-E • Optional temperature sensor 2: PAC-SE41TS-E <p>They can be assigned to each of the zones.</p>
Damper Motor (Locally Supplied)	<p>Only drive open, drive close damper motor can be connected. (Spring motor damper cannot be used) If 24 V AC motors are used ensure the transformer is adequately sized for the zone motors connected and ensure it's suitable for the installation conditions.</p>

Optional Parts

	Joint Pipe		Liquid Ref. Dryer	Air Outlet Guide					Air Protection Guide		Drain Socket	Centralised Drain Pan		M-NET Converter	Control/Service Tool
	Unit Ø9.52 Pipe Ø12.7		For Pipe Ø9.52												
	PAC-SG73RJ-E	PAC-SJ88RJ-E	PAC-SG82DR-E	MAC-881SG	MAC-886SG	MAC-889SG	PAC-SG59SG-E	PAC-SH96SG-E	PAC-SH63AG-E	PAC-SH95AG-E	PAC-SH71DS-E	PAC-SG64DP-E	PAC-SH97DP-E	PAC-SJ95MA-E	PAC-SK52ST
S Series	SUZ-M25VAD-A			●		●									
	SUZ-M35VAD-A			●		●									
	SUZ-M50VAD-A				●										
	SUZ-M60VAD-A				●										
	SUZ-M71VAD-A				●										
P Series	PUZ-M100VKA-A	●	●						●	●	●		●	●	●
	PUZ-M125VKA-A	●	●						●	●	●		●	●	●
	PUZ-M140VKA-A	●	●						●	●	●		●	●	●
	PUZ-ZM71VHA-A	●	●				●		●		●	●		●	●
	PUZ-ZM100VKA-A	●	●						●	●	●		●	●	●
	PUZ-ZM100YKA-A	●	●						●	●	●		●	●	●
	PUZ-ZM125VKA-A	●	●						●	●	●		●	●	●
	PUZ-ZM125YKA-A	●	●						●	●	●		●	●	●
	PUZ-ZM140VKA-A	●	●						●	●	●		●	●	●
	PUZ-ZM140YKA-A	●	●						●	●	●		●	●	●
	PUZ-RP170VKA-A	●	●						●	●	●		●	●	●
	PUZ-RP170YKA-A	●	●						●	●	●		●	●	●
	PUZ-RP200YKA-A	●	●						●	●	●		●	●	●
	PUHZ-RP250YKM-A								●	●	●		●	●	●

		Filter Box			Drain Pump	System Control Interface	Wi-Fi Interface	Power Supply Terminal Kit	Wired Remote Controller		Wireless Remote Controller		Remote Sensor	Remote On/Off Adapter	
		PAC-KE93 TB-E	PAC-KE94 TB-E	PAC-KE95 TB-E					Controller		Signal Sender	Signal Receiver			
									PAR-40MA	PAC-YT52 CRA					
S Series	Ceiling Concealed	SEZ-M25DA(L)			●	●	●		●*1	●*1	●	●	●	●	
		SEZ-M35DA(L)			●	●	●		●*1	●*1	●	●	●	●	●
		SEZ-M50DA(L)			●	●	●		●*1	●*1	●	●	●	●	●
		SEZ-M60DA(L)			●	●	●		●*1	●*1	●	●	●	●	●
		SEZ-M71DA(L)			●	●	●		●*1	●*1	●	●	●	●	●
P Series	Ceiling Concealed	PEAD-M50JAA(D)	●			●	●	●	●	●	●	●	●	●	●
		PEAD-M60JAA(D)	●			●	●	●	●	●	●	●	●	●	●
		PEAD-M71JAA(D)	●			●	●	●	●	●	●	●	●	●	●
		PEAD-M100JAA(D)		●			●	●	●	●	●	●	●	●	●
		PEAD-M125JAA(D)		●			●	●	●	●	●	●	●	●	●
		PEAD-M140JAA(D)			●		●	●	●	●	●	●	●	●	●
		PEA-M100GAA					●	●	●	●	●	●	●	●	●
		PEA-M125GAA					●	●	●	●	●	●	●	●	●
		PEA-M140GAA					●	●	●	●	●	●	●	●	●
		PEA-M100HAA					●	●	●	●	●	●	●	●	●
		PEA-M125HAA					●	●	●	●	●	●	●	●	●
		PEA-M140HAA					●	●	●	●	●	●	●	●	●
		PEA-RP170WJA					●	●	●	●	●	●	●	●	●
		PEA-RP200WJA					●	●	●	●	●	●	●	●	●
		PEA-RP250WHA					●	●	●	●	●			●	●

*1 PAC-SH29TC-E is required.

The products of Mitsubishi Electric Australia come with guarantees, additional to this Warranty, that cannot be excluded under the Australian Consumer Law. You are entitled to a replacement or refund for a major failure and for compensation for any other reasonably foreseeable loss or damage. You are also entitled to have the goods repaired or replaced if the goods fail to be of acceptable quality and failure does not amount to a major failure.



See website for full Terms
and Conditions

DUCTED2021_SEP4

Products in this brochure contain refrigerant R32 and R410A. Please refer to the specifications before installation and servicing of these products. The purchaser must ensure that the person and/or companies are suitably licensed and experienced are permitted to install, service and repair the air conditioners. Suitable access for warranty and service is required. Specifications, designs and other content appearing in this brochure is current at the time of printing, and is subject to change without notice. Images are representational for illustration purposes. Printed: September 2021.

For more information contact
www.mitsubishielectric.com.au
Call 1300 722 228

Distributed and guaranteed throughout Australia by
MITSUBISHI ELECTRIC AUSTRALIA PTY. LTD.
(Incorporated in New South Wales) A.B.N. 58 001 215 792